

CROFTS & ASSINDER

EST. 1875

STYLE GUIDE 2020

UNIQUELY BRITISH

You could spend a lifetime discovering unique British buildings, furniture and landmarks; we have. From the very beginning Crofts & Assinder has specialised in the design and manufacture of extraordinary cabinet handles and luxury fittings. In our 140 year history we have had the privilege of dressing furniture at London's Ritz and Waldorf hotels, the White House in Washington, Parliament House in Buenos Aires and ships of the Cunard and White Star Line.

Established in 1875 George Crofts and Frederick Assinder commenced trading as brass founders at the heart of British industry in Birmingham, England. To this day, Crofts & Assinder has stood the test of time and remains in the same hands of the families that created the company at the outset. We endeavour to make the ordinary extraordinary, combining a unique blend of our British heritage with timeless design and quality.

Key

FC	Fixing Centres
L	Length
W/D	Width/Diameter
H/P	Height/Projection

All Dimensions are given in mm



CONTENTS

Mazak	5
Grosvenor by Crofts & Assinder	16
Glass	20
Iron	22
Brass	40
Frequently Asked Questions	42
Finishes	45



Marlborough handle shown in Brushed Satin Nickel



MAZAK



1. MARLBOROUGH

Shown in American Copper

		FC	L	W/D	H/P
HN-M-4148-128	Pull	128	172	15	30
HN-M-4148-160	Pull	160	204	15	30

*New Finish, coming Summer 2020.



American Bronze*



Polished Nickel



Chrome



Brushed Copper



Brushed Satin Nickel



American Copper

2. MICHIGAN

Shown in Matt Black

		FC	L	W/D	H/P
HN-A-4190	Pull	128 160 192	242	8	28



Matt Black



Matt Pink



Matt Gold



Matt Silver



Chrome

3. CALGARY

Shown in Brushed Satin Nickel

		FC	L	W/D	H/P
KB-M-4163-35	Knob		-	35	29
KB-M-4163-40	Knob		-	40	37
HN-M-4160-128	Cup	128	155	31	29

*New Finish, coming Summer 2020.

**New Finish.



Calgary knobs shown in American Copper & Polished Nickel.



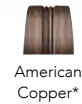
Calgary shown in Brushed Satin Nickel

4. GEORGIA

Shown in Chrome

		FC	L	W/D	H/P
KB-M-3840-32	Knob	-	32	32	28
HN-M-3841-128	Pull	128	177	24	28
HN-M-3843-96	Cup	96	145	41	27
HN-M-3843-128	Cup	128	193	41	27

*New Finish, coming Summer 2020.
Only available in pull handle and knob.



American Copper*



Brushed Satin Nickel



Chrome

5. SHREWSBURY

Shown in Chrome

		FC	L	W/D	H/P
KB-M-3947	Knob*	-	58	20	38
HN-M-3948-128	Pull	128	142	14	37
HN-M-3948-160	Pull	160	176	16	41
HN-M-3948-192	Pull	192	211	17	45

Please note that the Chrome knob only in this range has been discontinued effective from December 2020. Please call us to check any remaining availability.



Brushed Satin Nickel



Chrome



6. CORBUSIER

Shown in Brushed Satin Nickel

		FC	L	W/D	
KB-M-3920-34	Knob	-	34	34	23
HN-M-3921-128	Pull	128	142	14	34
HN-M-3921-160	Pull	160	174	14	34



Brushed Satin Nickel

Chrome

7. VINTAGE

Shown in Chrome

		FC	L	W/D	H/P
HN-M-3922-160	Pull	160	177	20	26



Brushed Satin Nickel

Chrome



Monmouth Cup Handles shown in Brushed Copper



8. MONMOUTH

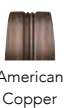
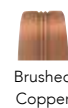
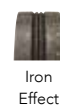
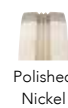
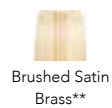
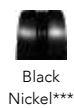
Shown in American Copper

		FC	L	W/D	H/P
KB-M-3976-32	Knob	-	-	32	27
KB-M-3976-38	Knob	-	-	38	32
HN-M-3978-64	Cup (Round)	64	104	48	30
HN-M-3981-64	Cup (Square)	64	104	48	30
HN-M-3977-128	Pull	128	193	20	26
HN-M-3977-160	Pull	160	232	20	26

*New Finish, coming summer 2020.

**New Finish.

***Finish only available in round cup and knobs.

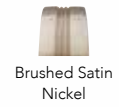




9. RETRO

Shown in Chrome

		FC	L	W/D	H/P
HN-M-3923-160	Pull	160	171	20	26



10. ACANTHUS

Shown in Nickel Pewter

		FC	L	W/D	H/P
KB-M-3804-32	Knob	-	-	32	29
KB-M-3804-48	Knob	-	-	48	36
HN-M-3805-96	Pull	96	120	11	29
HN-M-3805-128	Pull	128	145	16	37



11. MALVERN

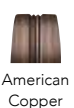
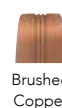
Shown in American Copper

		FC	L	W/D	H/P
KB-M-3939-30	Knob	-	-	30	30
KB-M-3939-35	Knob	-	-	35	30
HN-M-3938-96	Pull	96	186	20	30
HN-M-3938-128	Pull	128	208	20	30



*New Finish, coming Summer 2020.

**New Finish.



American
Bronze*

Matt
Black**

Black
Nickel

Chrome

Brushed
Copper

Brushed Satin
Nickel

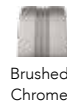
American
Copper



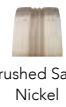
12. CHICAGO

Shown in Chrome, Brushed Chrome & Brushed Satin Nickel

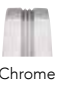
		FC	L	W/D	H/P
HN-M-4176-160	Pull	160	170	22	31



Brushed
Chrome



Brushed Satin
Nickel



Chrome

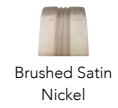
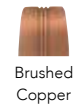


Chicago shown in Brushed Chrome

13. BIOKO

Shown in Brushed Copper

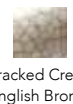
		FC	L	W/D	H/P
HN-A-3730-192	Pull	192	256	8	28



14. CERAMIC BORDEAUX

Shown in Cracked Cream English Bronze

		FC	L	W/D	H/P
KB-CM-3620	Knob	-	-	35	32
HN-CM-3622-128	Pull	128	153	25	40
KB-CM-3621	T-Bar	-	89	25	42







GROSVENOR BY CROFTS & ASSINDER

15. ARUNDEL

Shown in Chrome

		FC	L	W/D	H/P
HN-M-4200-192	Pull	192	205	14	30



Black Nickel



Chrome

16. KEW

Shown in Brushed Gold

		FC	L	W/D	H/P
HN-M-4215-160	Pull	160	190	25.5	25.8



Brushed Gold



Brushed Satin Nickel

New Release – Stocks now in!

17. STRATFORD

Shown in American Copper

		FC	L	W/D	H/P
HN-M-4216-160	Pull	160	177	17	32.5



American Copper



Chrome

New Release – Stocks now in!



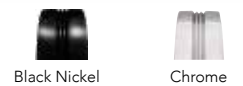
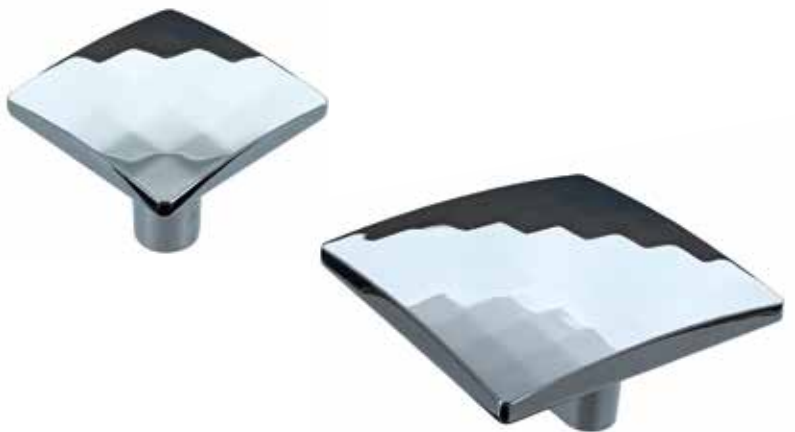
Arundel pull shown in Chrome



Mosaic shown in Chrome, Rose Gold and Black Nickel*

18. MOSAIC
Shown in Chrome

		FC	L	W/D	H/P
KB-M-4192-30	Knob	-	-	30	35
KB-M-4192-60	Knob	32	-	60	35



*Rose Gold no longer available.

19. MIDHURST

Shown in American Copper

		FC	L	W/D	H/P
HN-M-4217-160	Pull	160	177	20	20

New Release – Stocks now in!



American Copper

20. CHICHESTER

Shown in Matt black

		FC	L	W/D	H/P
HN-M-4218-160	Pull	160	178	18	28

New Release – Stocks now in!



Matt Black



Chrome

21. ALNWICK

Shown in Black Nickel

		FC	L	W/D	H/P
HN-M-4199-160	Pull	160	170	12	34



Black Nickel



Chrome



GLASS

22. CRYSTAL EFFECT KNOB

Shown in Chrome

		☺	☹	W/D	H/P
KB-G-4108-30	Crystal Effect Knob	-	-	30	41



Please note that this item has been discontinued effective from October 2020. Please call us to check any remaining availability.



Chrome

23. HIGH END CRYSTAL KNOB

Shown in Chrome

		☺	☹	W/D	H/P
KB-G-4109-20	High End Crystal Knob	-	-	20	30
KB-G-4109-30	High End Crystal Knob	-	-	30	41



Chrome

24. CRYSTAL EFFECT KNOB

Shown in Chrome

		FC	L	W/D	H/P
KB-G-4110-25	Crystal Effect Knob	-	-	25	35
KB-G-4110-30	Crystal Effect Knob	-	-	30	42



Please note that this item has been discontinued effective from October 2020. Please call us to check any remaining availability.



Chrome

25. CRYSTAL EFFECT KNOB

Shown in Chrome

		FC	L	W/D	H/P
KB-G-4111-25	Crystal Effect Knob	-	-	25	36
KB-G-4111-30	Crystal Effect Knob	-	-	30	42
KB-G-4111-35	Crystal Effect Knob	-	-	35	48



Chrome



IRON

26. MONTREAL

Shown in Iron Lacquer

		FC	L	W/D	H/P
KB-I-4165-38	Knob	-	58	38	33
HN-I-4164-96	Cup	96	138	54	29

New Launch – Coming Summer 2020.



Matt Black



Iron Lacquer

27. OTTAWA

Shown in Iron Lacquer

		FC	L	W/D	H/P
HN-I-3889-128	Pull	128	164	16	25



Iron Lacquer





28. WINCHESTER

Shown in Iron Lacquer

		FC	L	W/D	H
KB-I-3983-34	Knob	-	-	34	28
KB-I-3983-38	Knob	-	-	38	30
HN-I-3984-128	Pull	128	143	15	36
HN-I-3984-160	Pull	160	175	15	36



Iron Lacquer

29. HARROGATE

Shown in Iron Lacquer

		FC	L	W/D	H/P
HN-I-4095-128	Curved Pull	128	188	17	24
HN-I-4095-160	Curved Pull	160	228	17	25
HN-I-4094-128	Pull	128	164	16	23
HN-I-4094-160	Pull	160	196	16	23



Iron Lacquer

30. COSFORD

Shown in Iron Lacquer

		FC	L	W/D	H/P
HN-I-4194-128	Pull	128	141	8	43
HN-I-4194-160	Pull	160	173	8	43



Iron Lacquer



Harrogate shown in Iron Lacquer



Kingston shown in Iron Lacquer



Kingston in Iron Lacquer Finish



31. KINGSTON

Shown in Matt Black

		FC	L	W/D	H/P
HN-I-4187-128	Pull	128	160	16	46
HN-I-4187-160	Pull	160	193	16	46

*New Finish.







32. BRECON

Shown in Iron Lacquer

		FC	L	W/D	H/P
KB-I-3624-35-KO	Knob	-	-	35	33
HN-I-3925-64	Cup	64	104	48	30
HN-I-3924-128	Pull	128	193	20	26

*New Finish.



Matt Black*



Iron Lacquer

33. LUDLOW

Shown in Iron Lacquer

		FC	L	W/D	H/P
KB-I-3949	Knob	-	58	20	38
HN-I-3950-128	Pull	128	141	12	36
HN-I-3950-160	Pull	160	176	16	40
HN-I-3950-192	Pull	192	210	17	46



Iron Lacquer

34. BUXTON

Shown in Iron Lacquer

		FC	L	W/D	H/P
KB-I-3910-34	Knob	0	0	34	40



Iron Lacquer



35. ANNECY

Shown in Iron Lacquer

		FC	L	W/D	H/P
HN-I-4098-128	Pull	128	164	20	25
HN-I-4098-160	Pull	160	196	20	25



Iron Lacquer

36. CHAMBÉRY

Shown in Iron Lacquer

		FC	L	W/D	H/P
HN-I-4099-128	Pull	128	174	16	25
HN-I-4099-160	Pull	160	206	16	25



Iron Lacquer

37. MONTROSE

Shown in Iron Lacquer

		FC	L	W/D	H/P
HN-I-3887-128	Pull	128	149	18	39
KB-I-3885-32	Knob	-	-	32	35



Iron Lacquer



Windsor shown in Iron Lacquer

38. WINDSOR
Shown in Iron Lacquer

		FC	L	W/D	H
KB-I-3951-34	Knob	-	-	34	25
HN-I-3952-128	Pull	128	151	25	28
HN-I-3952-160	Pull	160	185	25	28

*New Finish.




Matt
Black*


Iron Lacquer



39. GEORGE

Shown in Iron Lacquer

		FC	L	W/D	H/P
KB-I-3849-32	Knob	-	32	32	28
HN-I-3851-96	Cup	96	145	27	41
HN-I-3850-128	Pull	128	177	24	28
HN-I-3850-224	Pull	224	268	24	28




Iron Lacquer

40. NORFOLK

Shown in Iron Lacquer

		FC	L	W/D	H/P
KB-I-3965-60	Knob	-	60	35	38




Iron Lacquer

41. MAYFAIR

Shown in Iron Lacquer

		FC	L	W/D	H/P
KB-I-3672-32	Knob	32	58	18	26
HN-I-3673-96	Pull	96	132	18	26
HN-I-3673-128	Pull	128	164	18	26
HN-I-3673-160	Pull	160	196	18	26
HN-I-3673-192	Pull	192	228	18	26
HN-I-3673-224	Pull	224	260	18	26




Iron Lacquer



42. CHELTENHAM

Shown in Iron Lacquer

		FC	L	W/D	H/P
HN-I-4096-128	Pull	128	152	16	25
HN-I-4096-160	Pull	160	184	16	25



Iron Lacquer

43. LOVE

Shown in Iron Lacquer

		FC	L	W/D	H/P
HN-I-3598-96	Pull	96	143	31	28



Iron Lacquer

44. SHEFFIELD

Shown in Iron Lacquer

		FC	L	W/D	H/P
HN-I-3961-160	Pull	160	180	24	30
HN-I-3961-192	Pull	192	212	24	30
HN-I-3961-224	Pull	224	244	26	32



Iron Lacquer



Arran shown in Iron Lacquer



45. SHERWOOD

Shown in Iron Lacquer

		FC	L	W/D	H/P
HN-I-3670	Latch	96	147	22	34
HN-I-3669-128	Pull	128	192	22	27
HN-I-3669-160	Pull	160	224	22	27



Iron Lacquer

46. ARRAN

Shown in Iron Lacquer

		FC	L	W/D	H/P
HN-I-3744-96	Pull	96	176	20	30
HN-I-3744-128	Pull	128	208	20	30
HN-I-3744-160	Pull	160	240	20	30



Iron Lacquer



47. BORDEAUX

Shown in Iron Lacquer

		FC	L	W/D	H/P
KB-I-3624-35	Knob	-	-	35	37
KB-I-3624-48	Knob	-	-	48	39
HN-I-3626-128	Pull	128	153	25	40
KB-I-3625-90	T-Bar	-	90	25	42



Iron Lacquer

48. JUPITER

Shown in Iron Lacquer

		FC	L	W/D	H/P
KB-I-3738-34	Knob	-	-	34	29
KB-I-3738-38	Knob	-	-	38	33
HN-I-3741-128	Pull	128	154	26	43



Iron Lacquer

49. MOSELEY

Shown in Iron Lacquer

		FC	L	W/D	H/P
KB-I-3810-36	Knob	-	36	13	29
KB-I-3810-56	Knob	-	56	20	38



Iron Lacquer



50. NOTTINGHAM

Shown in Iron Lacquer

		FC	L	W/D	H/P
KB-I-3757-30	Knob	-	-	30	30
KB-I-3757-40	Knob	-	-	40	41



Iron Lacquer

51. HADLEY

Shown in Iron Lacquer

		FC	L	W/D	H/P
HN-I-3601-128	Pull	128	136	17	26



Iron Lacquer



52. SNOWDON

Shown in Iron Lacquer

		FC	L	W/D	H/P
KB-I-4052-34	Knob	-	-	34	30
KB-I-4052-38	Knob	-	-	38	32
HN-I-4053-64	Pull	64	154	12	30
HN-I-4053-96	Pull	96	196	12	33
HN-I-4053-160	Pull	160	269	12	33



Iron Lacquer

53. SALAMANDER

Shown in Iron Lacquer

		FC	L	W/D	H/P
KB-I-3755-25	Knob	-	-	25	32
KB-I-3755-35	Knob	-	-	35	30



Iron Lacquer

54. TEXAS

Shown in Iron Lacquer

		FC	L	W/D	H/P
KB-I-3689-34	Knob	-	-	34	25
KB-I-3689-40	Knob	-	-	40	28



Iron Lacquer



55. WARWICK
Shown in Iron Lacquer

			FC	L	W/D	H/P
55(a)	HN-I-3175-128	Pull	128	144	27	18
55(b)	HN-I-3174-128	Pull	128	146	15	28
55(c)	HN-I-3078-96	Pull	96	150	21	36
55(d)	HN-I-3173-64	Cup	64	102	44	23
55(d)	HN-I-3172-64	Cup (mottled)	64	100	41	23
55(e)	KB-I-3379-34	Knob	-	-	34	29
55(e)	KB-I-3379-38	Knob	-	-	38	31
55(f)	BP-I-3380-22	Backplate	-	-	22	4
55(f)	BP-I-3380-25	Backplate	-	-	25	5
55(g)	KB-I-3159	Knob	-	-	28	40
55(h)	KB-I-2866-34	Knob	-	-	34	29
55(h)	KB-I-2866-38	Knob	-	-	38	29
55(i)	KB-I-3257-35	Knob	-	35	35	24
55(j)	KB-I-3161	Knob	-	40	20	30
55(k)	BP-I-3158	Backplate	-	-	32	4



55(a)



55(b)



55(c)



55(d)



55(e)



55(f)



55(h)



55(g)

55(j)



55(k)



55(i)



Iron Lacquer



BRASS

56. AMERSHAM

Shown in Polished Brass Lacquer

		FC	L	W/D	H/P
HN-B-3980-53	Cup	49	53	29	17
HN-B-3980-98	Cup	94	98	36	23



Chrome



Polished Brass
Lacquer

57. WEXFORD

Shown in Nickel Pewter

		FC	L	W/D	H/P
HN-B-4463	Pull	64	96	29	32
KB-B-4384-30	Knob	-	-	30	27
KB-B-4384-35	Knob	-	-	35	34



Nickel Pewter



Corbusier shown in Brushed Satin Nickel – See page 9.

FREQUENTLY ASKED QUESTIONS

How do I order?

Please phone, fax or e-mail our Birmingham Headquarters:

t +44 (0) 121 622 1074

f +44 (0) 121 622 5718

e general@crofts.co.uk

What are our hours of business?

Monday – Thursday 08:00 – 16:30

Friday 08:15 – 12:30

How do we interpret your dimensional information?

The majority of our handles are in metric sizes, with dimensions given in millimetres, however we do offer some handles in imperial sizes for our overseas markets with centre fixing dimensions of 3", 8", 12" and 18". Our double fixing handles start from centres of 32mm with additional incremental sizes of 32mm being added where applicable. The majority of our products are tapped with M4 threads with a minimum depth of 4mm. A few of our larger handles may be tapped with M6 threads. Please ask our Sales Team for confirmation when ordering. Dimensions of cast iron and ceramic hardware may vary slightly due to the manufacturing process.

How are your products packed?

We aim to supply the majority of our handles packed in poly-bags complete with an M4 x 25mm screw and an M4 x 45mm snap off screw per fixing hole. Please note not all handles are packed to this specification. Box quantities range from 10 – 50 pieces depending upon the size of the product. For non-standard packaging and alternative screw lengths, please contact our Sales Team on + 44 (0) 121 622 1074.

Cleaning Instructions

We recommend cleaning with the use of a dry, lint free cloth or wiping the product using a soft cloth with beeswax. Under no circumstances should any form of metal cleaner, aerosol spray cleaner or solvent based abrasive cleaning solutions be applied to our products as these can remove protective lacquers. If such cleaning agents are used, products can become damaged, which may invalidate any warranty.



How can I hear about new developments in your Company?

We have a team of Regional Sales Managers who regularly make personal visits. Please call the Sales Office on + 44 (0) 121 622 1074 to find out your contact.

What are your lead times?

Lead times vary from region to region and by product to product. Please contact our Sales Team on + 44 (0) 121 622 1074 to verify stock availability and lead times.

Can we reproduce C&A product images?

All copyright and intellectual property rights are the property of Crofts & Assinder Ltd. No persons can reproduce any part of this catalogue by any means, electronic or mechanical without prior written permission from the Company.

What are your Terms & Conditions?

Our Terms and Conditions may be obtained from our Sales Team and they accompany all account application forms.

Error & Omissions Excepted

Due to our policy of continued product development, we reserve the right to alter materials and specifications without prior notice. Please contact our Sales Team for further information.

Although every care has been taken to ensure the accuracy of the information in this catalogue, we cannot accept responsibility for omissions or inaccuracies.

Non Standard Finishes

Standard finishes are shown against each product displayed.

In cases where non standard finishes are requested, MOQ's and longer lead times may apply as these will be produced on a bespoke basis. Due to the nature of our products, many of which are hand finished, there may be some variations in finish from batch to batch.



Colour Reproduction

Due to photographic and printing processes some colours may not be a true representation of the product. Please see actual sample for colour.

Changes & Modifications

From time to time, as part of our continual product improvement program, Crofts & Assinder may need to modify tooling or design aspects. During this process small changes to the product may be applied. Crofts & Assinder reserves the right to make these changes without prior notification.

Intellectual Property

We protect and defend our intellectual property rights globally, particularly by means of Design Patents in the USA and Registered Designs in the UK & Europe.

Crofts & Assinder is an active member of ACID, a hard hitting action group committed to combating copyright theft. Please visit www.acid.co.uk for more details.



Acknowledgements

The authors and publishers are grateful for the kind permission of the following copyright owners to reproduce their images throughout this catalogue on the pages indicated:

- P4, p17 & p41 – © Denby Kitchen Company
- P6, p18 & p27 – © Ross Vincent Photography
- P7 & p34 – © Mereway Kitchens
- P10 – © Henderson & Redfearn
- P13 & P31 – © The Rigid Kitchen Company
- P15 & p28 – © Mark Stone Kitchens
- P23 – © Eric Bates
- P25 – © Neville Johnson
- P26 – © Hallwood Furniture

Design and print www.marshgraphicdesign.com



FINISHES

The table below illustrates the range of finishes that can be applied to specific base materials. Standard finishes are highlighted throughout the catalogue next to each product. Please note that for non-standard finishes minimum order quantities and longer lead times may apply.

	Finish	Iron	Zamak	Brass	Aluminium
	American Bronze (AB)		✓		
	American Copper (AC)		✓		
	Antique Finish (AF)			✓	
	Black Nickel		✓	✓	
	Brushed Chrome		✓		
	Brushed Copper (BC)		✓		✓
	Brushed Gold		✓		
	Brushed Pink		✓		
	Brushed Satin Brass (BSB)		✓	✓	
	Brushed Satin Nickel (BSN)		✓	✓	✓
	Chrome (C)		✓	✓	✓
	Cracked Cream Ceramic & English Bronze (CKC/E)		✓		
	Cracked White Ceramic & Nickel Pewter (CKW/NP)		✓		
	English Bronze (E)		✓		
	Florentine Bronze (FB)	✓			
	Grey				✓
	Iron Effect / Lacquer (I)	✓	✓		
	Matt Black	✓	✓	✓	✓
	Matt Gold				✓
	Matt Pink				✓
	Matt Silver				✓
	Nickel Pewter (NP)		✓		
	Pewter (P)		✓		
	Polished Brass Lacquer (PBL)			✓	
	Polished Nickel (PN)		✓	✓	
	Powder Coat Oil Rubbed Bronze (PC-ORB)	✓	✓		
	Powder Coat Rust (PR)	✓	✓		
	Rose Gold		✓	✓	
	White	✓	✓	✓	
	White Ceramic & Stainless Steel (W/SS)		✓		



NOTES

CROFTS & ASSINDER

EST. 1875

T : +44 (0) 121 622 1074
E : general@crofts.co.uk
W : www.crofts.co.uk